



Medical Communication Cards

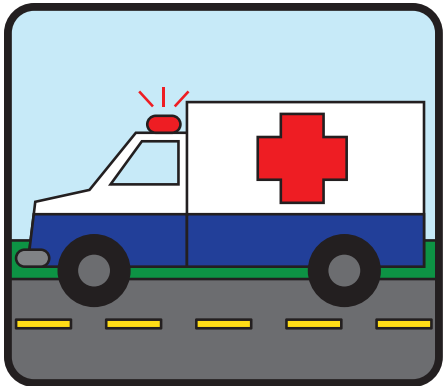
2019

This resource is a communication tool for hospital, ED, EMS providers and their patients. The cards are designed to assist in communication with children and families, especially non-English-speaking or non-verbal patients.

Materials and designs were created by Nye and Associates Smarter Marketing™ for University of Florida College of Medicine-Jacksonville, Dept. of Emergency Medicine. This tool was adapted from Minnesota Emergency Medical Services for Children (EMSC), Children's Hospitals and Clinics of Minnesota, Kansas EMSC and Kansas Department of Health.

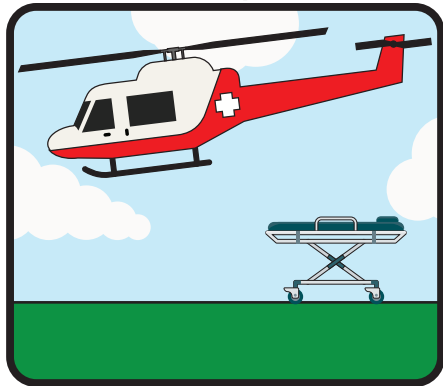
Funding provided by Florida Medical Malpractice Joint Underwriting Association (PECSI & PAMI), Florida EMSC Program and the Children's Miracle Network Hospitals.

Ambulance



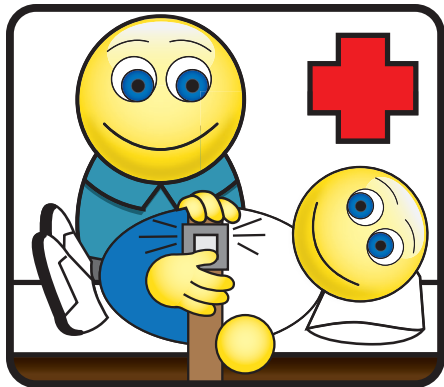
Ambulancia

Helicopter



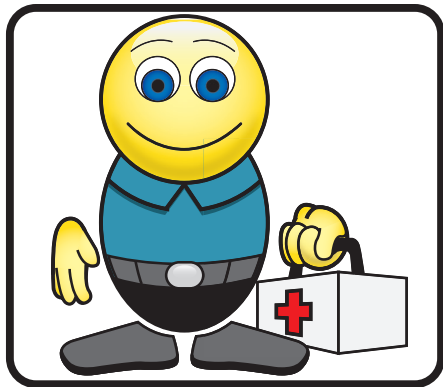
Helicóptero

Stretcher



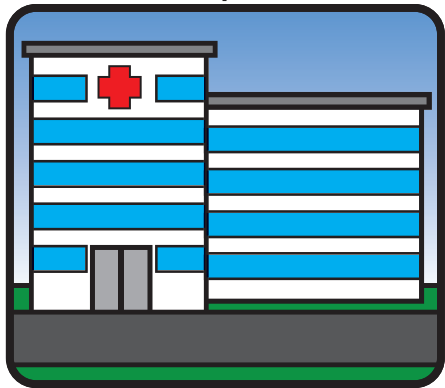
Camilla

Paramedic/EMT



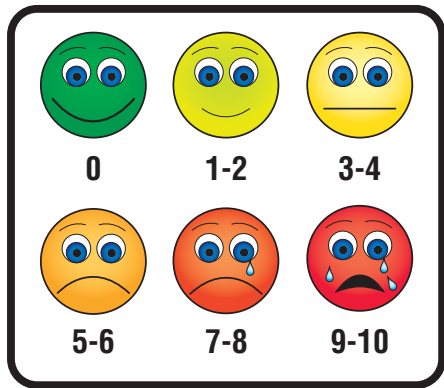
Paramédico

Hospital



Hospital

Pain Scale Faces



Caras de la Escala del Dolor

Pain Scale FLACC

FLACC SCALE	0	1	2
Face	No particular expression or smile	Occasional grimace or frown, withdrawn, disinterested	Frequent to constant frown, clenched jaw, quivering chin
Legs	Normal position or relaxed	Uneasy, restless, tense	Kicking or legs drawn up
Activity	Laying quietly, normal position, moves easily	Squirming, shifting back and forth, tense	Arched, rigid or jerking
Cry	None (awake or asleep)	Moans, whimpers, occasional complaint	Steady cry, scream, sobs, frequent complaints
Consolable	Content, relaxed	Reassured by touch, hug or talking, distractible	Difficult to console or comfort

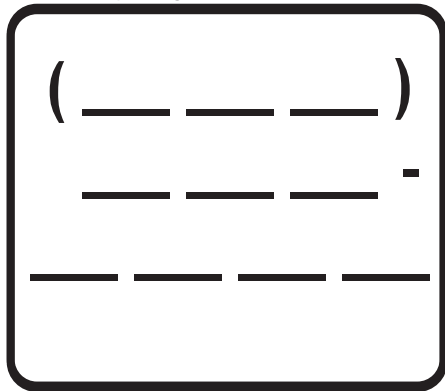
Escala de Dolor FLACC

Phone



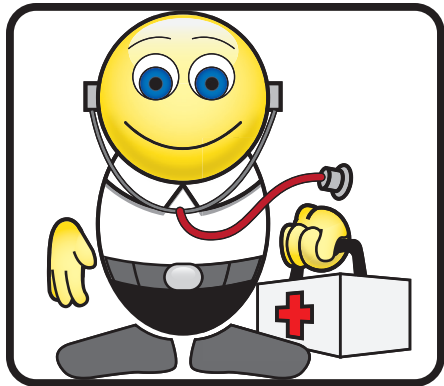
Teléfono

Emergency Contact Number



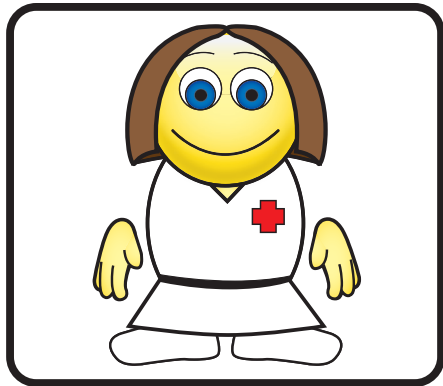
Número de contacto de emergencia

Doctor



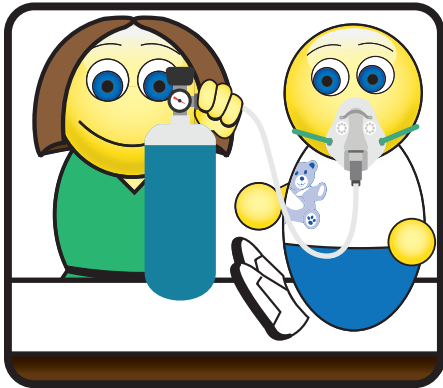
Doctor

Nurse



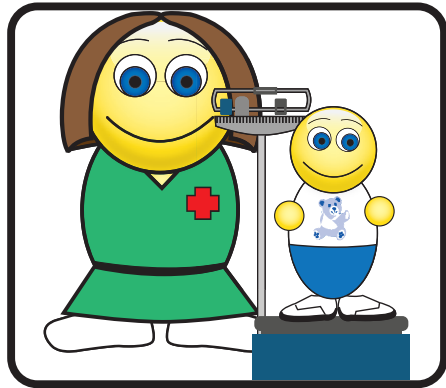
Enfermera

Oxygen Mask



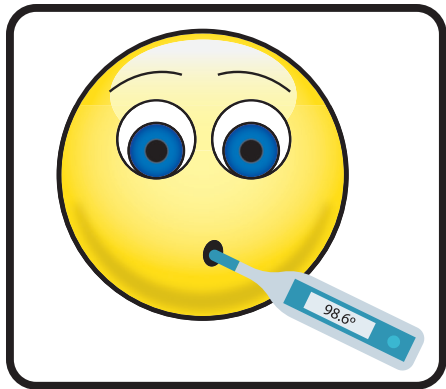
Mascara de oxigeno

Weight



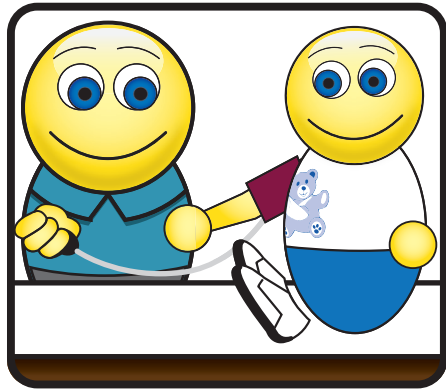
Peso

Thermometer



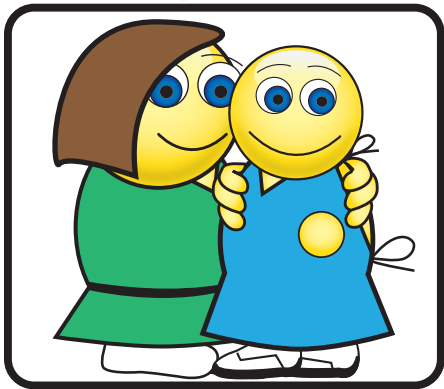
Termómetro

Blood Pressure



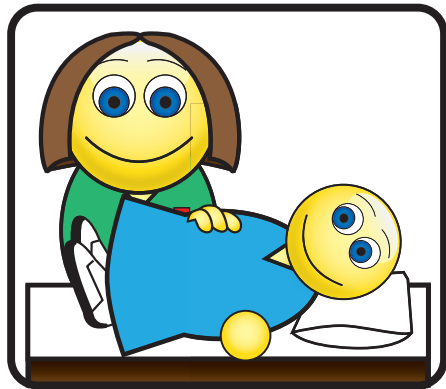
Presión sanguínea

Hospital Gown



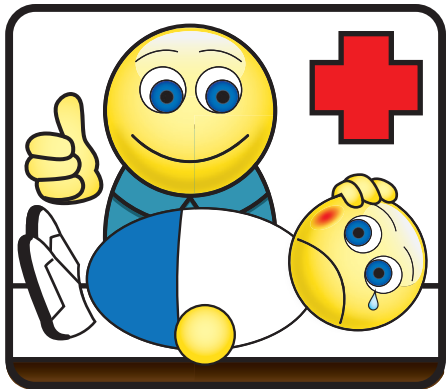
Bata de hospital

Bed



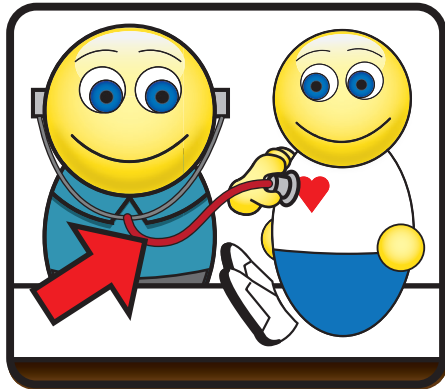
Cama

Examination



Examen

Stethoscope



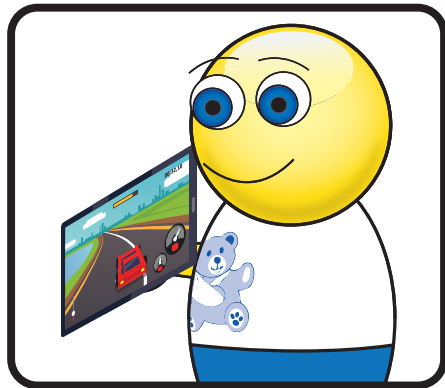
Estetoscopio

Toys



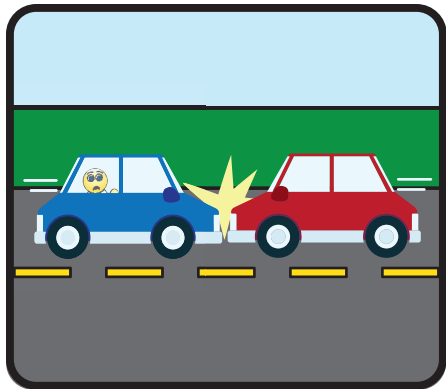
Juguetes

Tablet



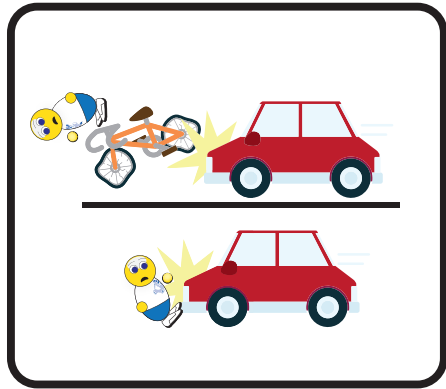
Tableta

Crash



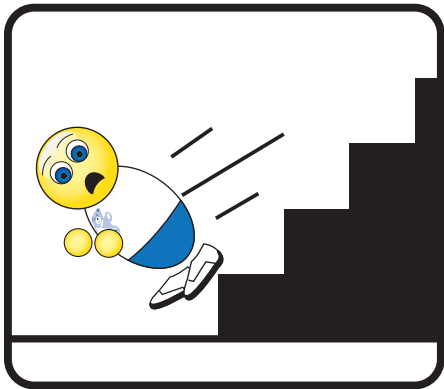
Choque

Hit by car



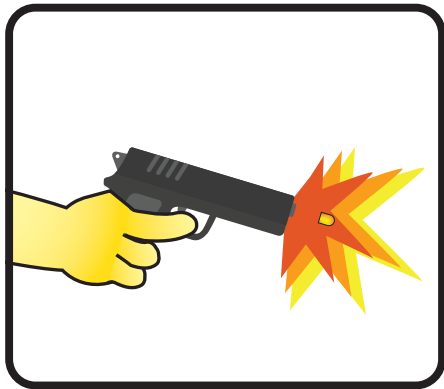
Golpeado por un coche

Fall



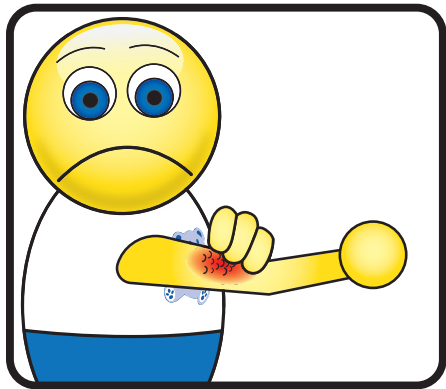
Caida

Gunshot



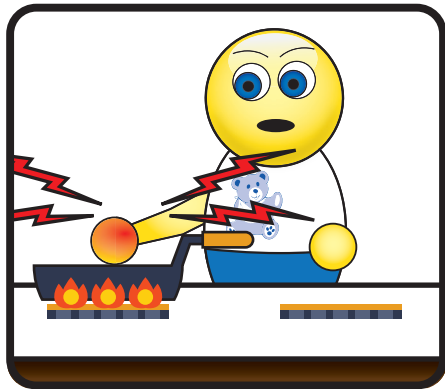
El/Un tiro

Rash/Bite



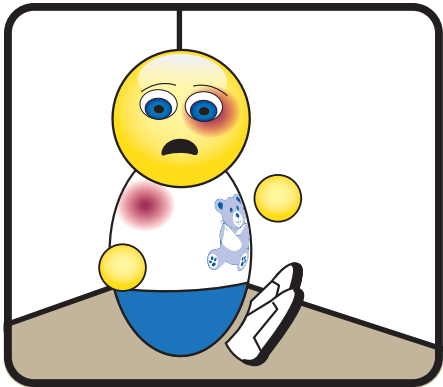
Erupción/ Picadura

Burn



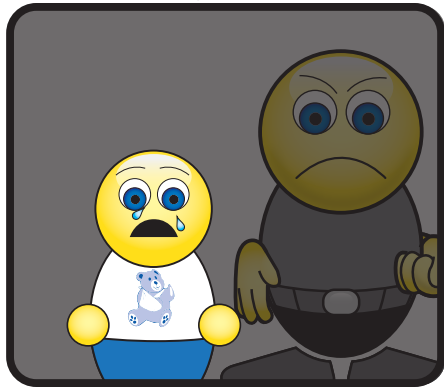
Quemar

Scared



Asustado

Frightened



Espantado

Happy



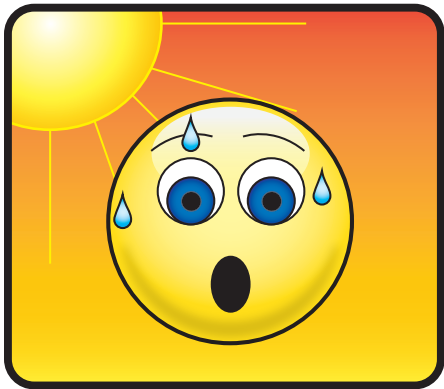
Feliz

Sad



Triste

Hot



Caliente

Cold



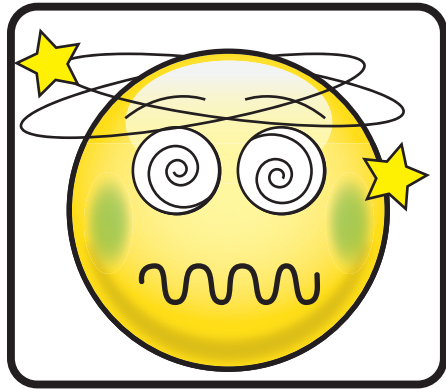
Frío

Sick



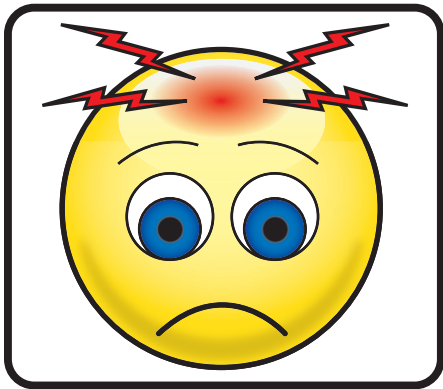
Enfermos

Dizzy



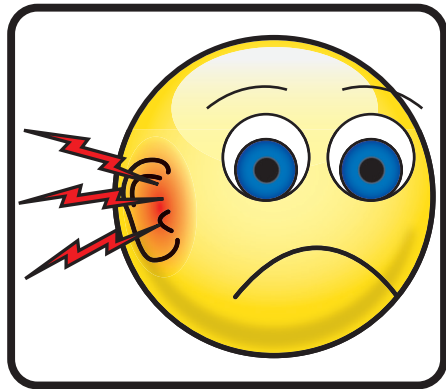
Mareado

Head Hurts



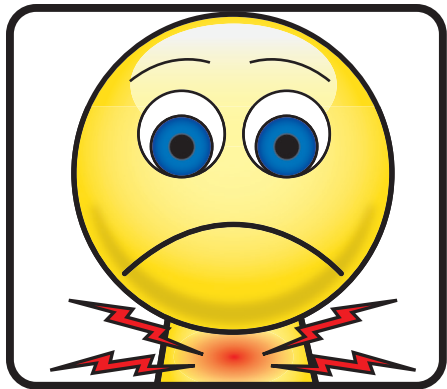
Duele la Cabeza

Ear Hurts



Dolores del Oído

Throat Hurts



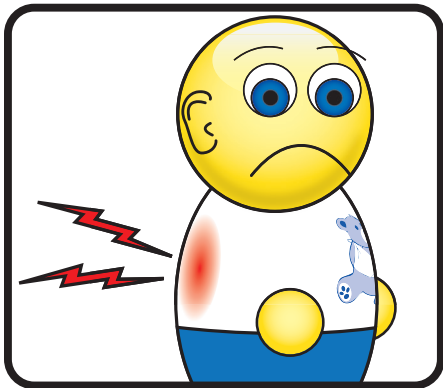
Duele la Garganta

Cough



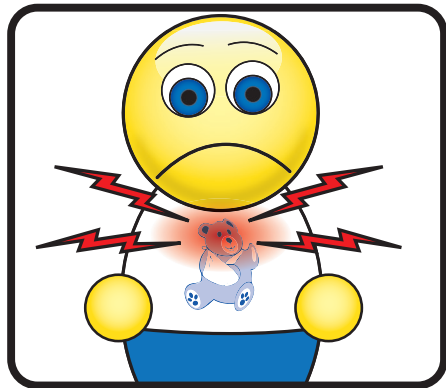
Tos

Back Hurts



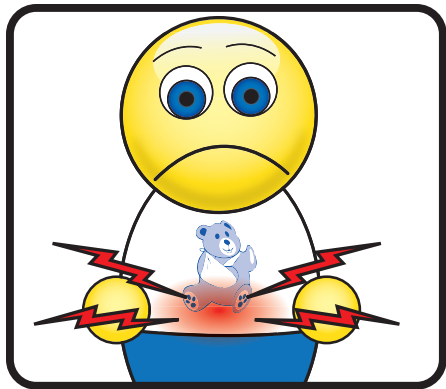
Dolor de Espalda

Chest Pain



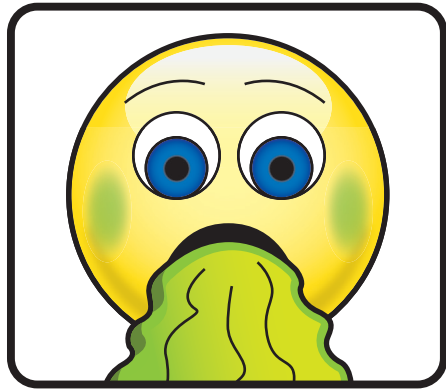
Dolor de Pecho

Stomach Hurts



Dolor de Estomago

Throw Up



Vomitar

Constipation



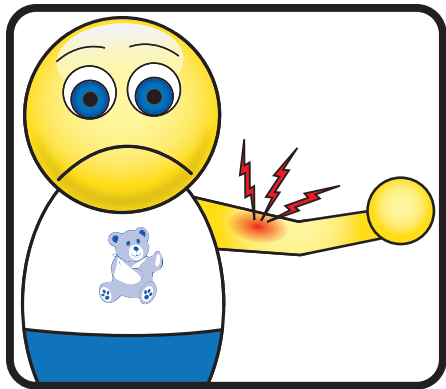
Estreñimiento

Diarrhea



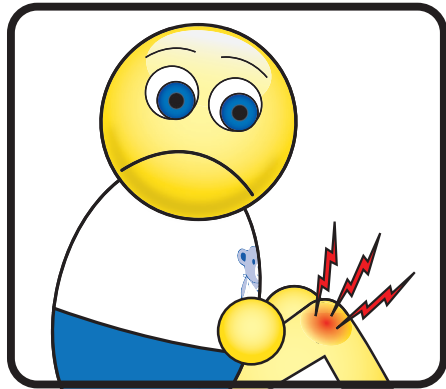
Diarrhea

Arm Hurts



Lesiona el Brazo

Leg Hurts



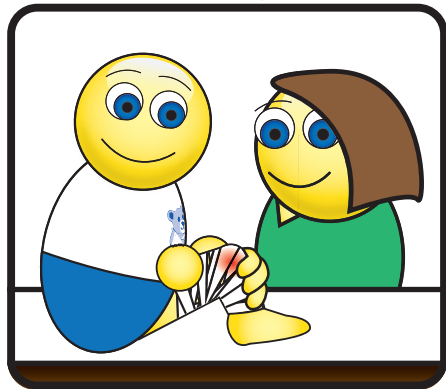
Me duele la pierna

Ice Pack



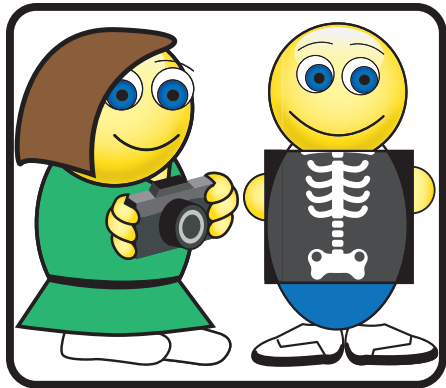
Paquete de hielo

Bandage



Vendaje

X-Ray



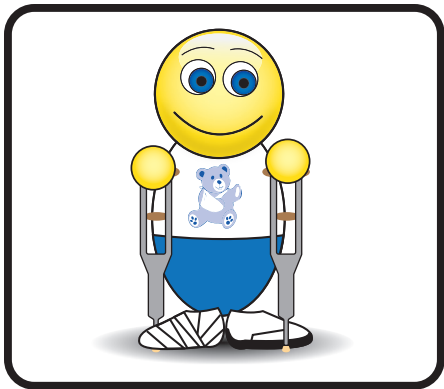
Radiografía

Inhaler



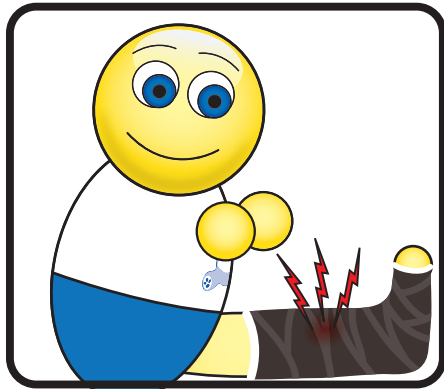
Inhalador

Crutches



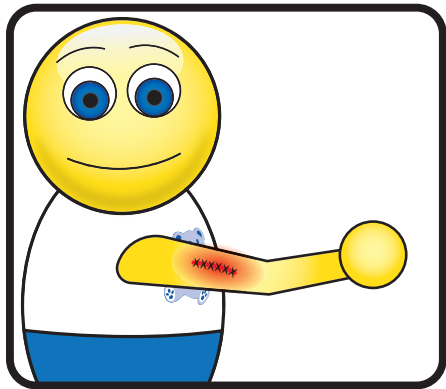
Muletas

Cast



Molde

Stitches



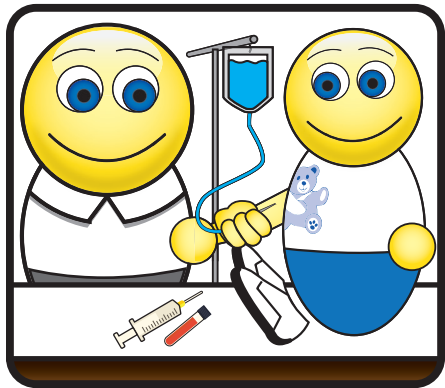
Puntadas

Sling



Cabestrillo

IV Fluid/ Blood test



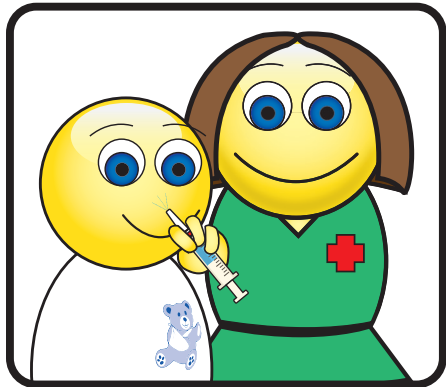
Fluido IV/ Prueba de Sangre

Medicine



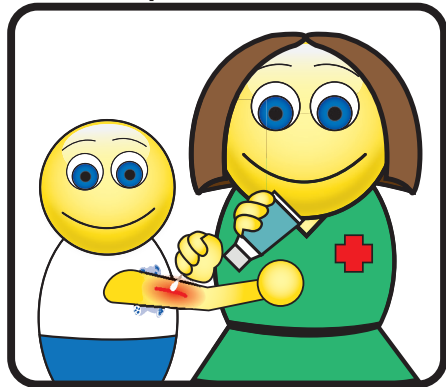
Medicina

Nasal Medicine



Medicina Nasal

Topical Medicine



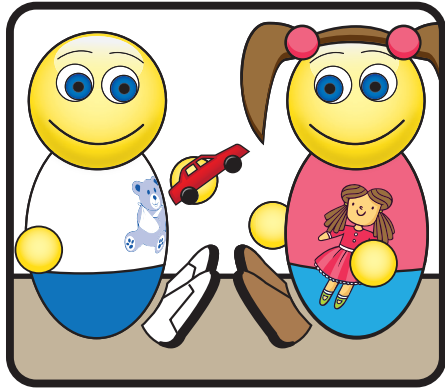
Medicina tópica

Home



Hogar

All Better



Todo mejor

Yes



Si

No



No

Use as needed with a dry erasable marker.

Uso según sea necesario con un marcador borrable en seco



www.emlrc.org/flpedready/

pami.emergency.med.jax.ufl.edu

PedReady@jax.ufl.edu

[904-244-8617](tel:904-244-8617)